

RELIANCE PETROCHEMICAL PLANT



- **LOCATION**

Jamnagar - Gujarat - India

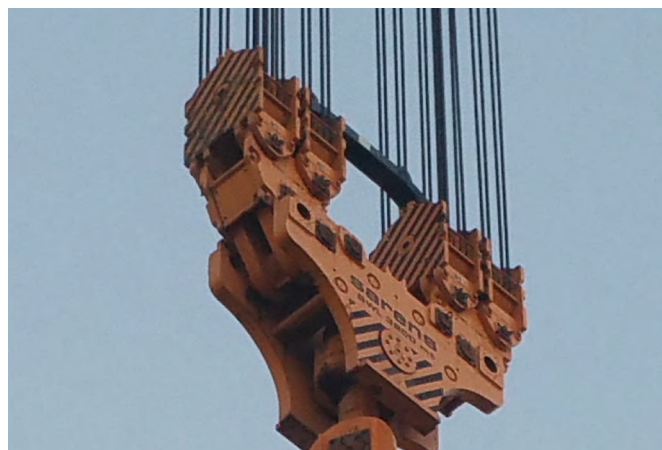
- **CLIENT**

Reliance Industries Limited

- **PROJECT SUMMARY**

Sarens executed all the superheavy lifts for the new refinery expansion at the Reliance Petrochemical Plant. Reliance claims to own the biggest petrochemical plant (30.000.000 m²) in the world and to be in possession of over 1.000 cranes.

At the project's peak, there was an on-site workforce in excess of 110.000 per day.



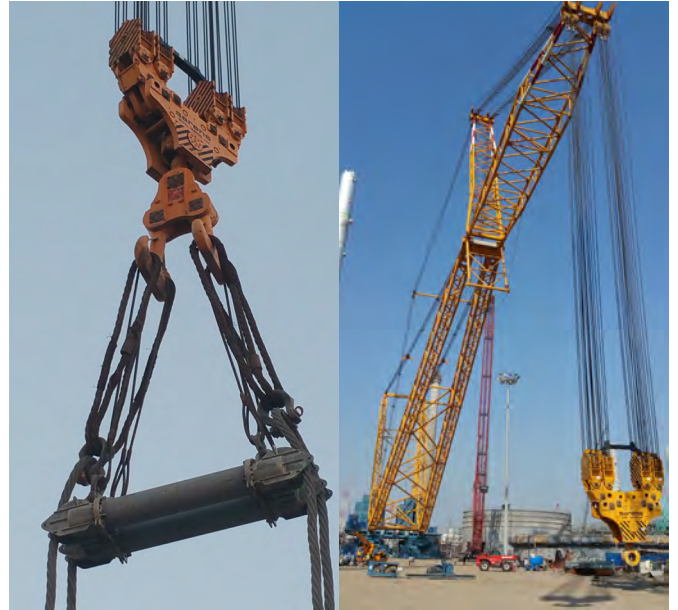
SGC PROJECT SUCCESS

• OBJECTIVE

- The SGC-120 performed five critical lifts and about seven structural modules. The operation required working in four locations with one

Benny” alias for the SGC-120, (named after late Executive Board member, Benny Sarens, who was the group’s driving force behind the design, development, and construction of the crane).

- The primary challenge was to assemble the crane in the shortest time possible.



• SOLUTIONS

- The project required three crane relocations.
- Thanks to the joint efforts of the Engineering department and the site team, Sarens was able to move larger crane parts among different crane positions, in order to minimize relocation time.

• RESULTS

- Safe and secure execution
- No accidents or incidents

**ENGINEERING IS THE CLOSEST THING
TO MAGIC THAT EXISTS IN THE WORLD.**

ELON MUSK, CIRCA 2015.

