

Do you want to know more about the Sarens Group and projects Worldwide?  
Please read our Heavyweight News n° 10.



# 10 Heavyweight News *from Sarens*

Half-yearly newsletter • Issue 10 • April 2008 • [www.sarens.com](http://www.sarens.com)

Dear reader,

The 2<sup>nd</sup> half of 2007 was very busy for the Sarens' equipment. Sarens established a new world record in Norway, by lifting the deck of an oilrig with a weight of more than 10.000t.

On the other side of the world, Martin Verzijl started in his new function as MD of Sarens South Africa (SSA).

Enjoy reading the latest edition of our Heavyweight News.



Carl Van den Eynde  
CEO

## FEATURED PROJECTS & COMPANY INFO

- The best Belgian Beers ...
- No glass broken ...
- Sarens operating on the "Ice" continent ...
- Sous le pont de Besançon, on y danse ...
- Lifting of a column
- More milestones on the Goro Nickel Project!
- The tallest lady of the class, nice isn't she?
- High & windy again
- Extreme Lift - World record
- Norway : engineering, puzzling, designing... that's their baby...
- Polish Power Plants
- From Poland with pleasure!
- Loadout timed to perfection
- Old bridge gone...
- The Netherlands often the "Frist of the class"...
- Q7 offshore: 60 windturbines Vestas V80
- Algerian projects in the picture
- Out of South Africa : old partner, new name, great projects,....
- Present in South Africa, why not in Zambia
- Makro, Sarens new partner in Brasil ... Let's dance...
- USA Projects
- Bare rental activities
- 29 turbines V90 on 80m

### The best Belgian Beers ... [\[top\]](#)



Location : Brewery Duvel in Breendonk, Belgium  
Equipment used : AC 700; LTM 1100/2; AC 50/2

6 tanks were transported from Sarre-Union (France) over the Brussels-Charleroi Canal.  
Sarens-tele looked for the most suitable place for unloading and transporting the tanks before lifting on site.



## No glass broken ... [\[top\]](#)



Client : Johan Dubois  
Location : Groot Bijgaarden, Belgium  
Equipment : LTM 1160

Greenhouses were completely relocated for a local florist. No glass was broken during this delicate operation ....



## Sarens operating on the "Ice" continent... [\[top\]](#)



Client : Arge Neumayer III Polar Station  
Location : Antarctica  
Equipment used : 2 x Sennebogen

The first German Antarctic station "Georg von Neumayer" (70°37'S, 8°22'W) operated by the Alfred Wegener Institute for Polar and Marine Research was built in 1981 and the second Neumayer station (70°39'S, 8°15'W) was finished in 1992. After 15 years of operation the current Neumayer station has already sunk 12 meters into the ice and will have to be abandoned within a few years. Thus the need for a new arctic research station, where Sarens joined forces.

Freezing cold conditions kept the ship (with both cranes) in a safe harbour. Our operators received special training in Cape Town and flew after 5 days to Antarctica. They stayed 8 days in a provisional camp before the hard work could start. After a 23 hour drive the cranes arrived at the construction site.



## Sous le pont de Besançon, on y danse... [\[top\]](#)



Client : Eiffage  
Location : Franois, Besançon, France  
Equipment used : 96 axle lines

Sarens & Eiffage, partners for life.  
Again a new concrete bridge driven into position.



## Lifting of a column [\[top\]](#)



Client : Ponticelli  
Location : Donges, France  
Equipment used : CC 2800

Lifting of a column C8001 with a CC 2800 at the Total Refinery in Donges.  
It becomes common practice.



## More milestones on the Goro Nickel Project! [\[top\]](#)



Client : INCO - Nickel  
Location : Goro mine, New Caledonia  
Equipment used : CC2800; SPMT's

The first bullet in place .....just 3 more to go! The bullet was



transported with a double 16L Kamag from the lay down to the installation area. Sarens lifted the bullets (weight 529t) from the SPMT's with a CC 2800 and with a LR1400/2. Both cranes had to drive 50m on a crane mat road to the positioning location ready for alignment. With these activities done, the project runs to an end.



## The tallest lady of the class, nice isn't she? [\[top\]](#)



Client : AREVA NP  
Location : Olkiluoto, Finland  
Equipment used : PC 9600

Sarens Group will be active for almost 2 years providing lifting services for heavy lift items to be installed in the Nuclear Power Plant reactor area.  
Proud we are working for Areva.

Photo ©AREVA/Päivi Bourdon



## High & windy again [\[top\]](#)



Client : Enercon  
Location : Cuxhaven / Emden, Germany  
Equipment used : CC 6800



## Extreme Lift - World record [\[top\]](#)



Client: Aker Kvaerner Stord AS / Aker Drilling AS  
Location: Stord, Norway  
Equipment: SMLT system; Strand Jacks; SPMT's; ballasting equipment

During a few days in November 2007 Sarens Transrig loaded out the 10.700t heavy topside of the first Aker H.6-e drilling rig, "Aker Spitsbergen". A total of 448 SPMT axles were used together with our ballast system and a wide set of supporting material for the operation.

Immediately after the load out, the barge was positioned within a set up of 8 SMLT (Sarens Modular Lifting Tower) sets and then the module was lifted to a height of approx 34m. The hull was brought under and the deck successfully mated.

The weight / dimension / height combination making it one of the most extreme heavy lift operations ever executed. The lifting system in the given configuration is designed for a lifting capacity of 14.400t and to withstand a full Norwegian winter storm.

Photo ©Tina Steinsland



## Norway: engineering, puzzling, designing...that's their baby... [\[top\]](#)



Client: StatoilHydro/Aker Reinertsen AS  
Location: NorthSea - Kristin platform  
Equipment: Special designed lifting device

During the summer of 2007 Sarens Transrig AS developed, designed, fabricated and mobilized offshore a special new type of lifting system for pulling off risers for maintenance onboard the Kristin Platform. Autumn 2007 the system was operational.

Sarens Transrig AS was awarded the task based on the best technical solution.

The system is built up by components with limited weight and dimension to fit the crane capacity and area available onboard the Kristin platform. When assembled the height of the system is 44m and total weight is only 60t. Self erection and its ability to skid in erected position are the main advantages of the system.



The CE certified lifting capacity is 90t and designed for a wave height of 5,2m combined with a 2 degree initial tilt. No accidents, nor injuries....



## Polish Power Plants [\[top\]](#)

Client: Karna  
Location: Belchatów - Poland  
Equipment: Linden 8000 1 / Tower crane - H = 167m

A Sarens Polska Linden tower crane was used to build 2 concrete staircase towers of a 800 MW power plant.

The Linden will continue working in 2008 in the same power plant for the construction of the cooling tower.

On that consecutive job, the hook height will be 198m and the crane will then stand inside a cooling tower anchored to the shell. Thanks to the major activities in Belchatów, Sarens Polska decided to open a new branch there.

More than 16 cranes from 25 to 1600t are at your service in Poland/Belchatów



## From Poland with pleasure! [\[top\]](#)

Client: Mostostal Zabrze  
Location: Sopot - Arena  
Equipment: LTM 1500; LTMII60/2; AC120; A600

Sarens Polska lifted and positioned several modules (heaviest element 80t) for the construction of one of the biggest arenas in Poland.



## Loadout timed to perfection [\[top\]](#)



Client: Osprey Shipping Ltd  
Location: Wallsend, UK  
Equipment: SPMT's

At the old Amec offshore yard at Wallsend Sarens UK loaded out a 340t 'A-Frame' for a 500t capacity Pipeline End Manifold (PEM) handling system. 20 axles Kamag SPMT, configured as 2 off single 10 axles, were used to complete the loadout operation which took under an hour including the set-down and removal of the trailers.

Barge grillages were also supplied by Sarens UK. The PEM was delivered to Keppel Shipyard in Rotterdam for final installation and commissioning.



## Old bridge gone... [\[top\]](#)

Client: Combinatie Sloop Waalbrug  
Location: Zaltbommel, The Netherlands-Bridge over "De Waal"  
Equipment used: 700t Hydraulic cranes; Barges Karel & Victor; SMPT's (112axles)



After a long legal battle, the old bridge over the A2 (Utrecht - Den Bosch) was dismantled in the period June - September 2007.

Several 700t telescopic cranes were used to lift the sections of the bridge located on land (8 pcs of 60m in total). The Special Projects Team of Sarens lifted and sailed out the 2 parts (2.350t) that spanned the river.

The boys did it again, creative as you can see in this picture.





## The Netherlands often the "First of the class"... [\[top\]](#)

 Client: De Boer Dintelmond, ASK Romein, Heerema Marine Contractors  
Location: Heijningen  
 Equipment used: cranes 50t up to 650t; SPMT's (48 axle lines); Barges (Karel & Victor); hydraulic jacks

For a Thialf offshore project, Heerema contracted ASK Romein & De Boer Dintelmond to build, trial-fit and transport to a seaport a PLET Tower Installation. Sarens was subcontracted to perform all the vertical and horizontal transport work.



## Q7 offshore: 60 windturbines Vestas V80 [\[top\]](#)

 Client : Vestas  
Location : IJmuiden (The Netherlands )  
 Equipment : Off shore : TC 3200 On shore : CC 2800; KH 850.

Vestas contracted Sarens Wind to install the "Q7 windpark" 23 km off the coast of IJmuiden in the Netherlands. In a water depth of 19 to 24m the 60 wind turbines of each 2 MW generate a yearly production of 435 GWh, enough for 125.000 standard family households.

Sarens performed all offshore lifts for the erection of the turbine and all onshore logistics operations.




## Algerian projects in the picture [\[top\]](#)

 Client : SNC Lavalin / RCG  
Location : Hadjret En Nous (Cherchell)  
Equipment : CC 2000 and SPMT's

Construction of a 1.200 MW power station. Lifting and positioning of different mechanical pieces and assembly of 3 chimneys. Sarens also transported the turbines (weighing 300t) from the temporary harbour to the final location.



 Client : CMC Di Ravenna  
Location : El Affroun (Blida)  
Equipment : Sumitomo SCX 2000

Lifting and positioning of 999 concrete beams, each weighing 60t, and 300 trusses , each 85t for the motorway East-West.



 Client : Orascom Construction  
Location : Alger  
Equipment : AC 205; GMK 2035; CKE 800

Construction of a desalination unit, with a capacity of 200.000m<sup>3</sup> a day. Lifting and positioning of turbines, pumps, pipes, tanks and metal structures.



 Client : Orascom Construction





Location : SIG (Oran)  
Equipment : CC2000

Construction of a cement factory with a production capacity of 3.700.000t/year. Lifting and positioning of different pieces and assembly of a furnace and chimneys.



## Out of South Africa: old partner, new name, great projects ... [\[top\]](#)



Client : Liebherr Container Cranes, Ireland  
Location : Durban  
Equipment : Crawler cranes of 500t, 250t and 100t; various 100t telescopic cranes

Liebherr gave the order to Sarens UK and the erection of the container in Durban was performed by SSA.



Client : Engski Pressurized Systems  
Location : Sasol 1 Refinery, Sasolburg, (south of Johannesburg)  
Equipment : Demag AC300 Load: 23t

Due to gusting wind conditions, and the surface area of the "roof", SSA had to be patient until the conditions were suitable for the lift.



Client : Liebherr Container Cranes, Ireland  
Location : Port Elizabeth Harbour  
Equipment : 100t telescopic cranes

A cooperation of Sarens UK and SSA, who supplied all local cranes and support for the project. After the completion of the "ship to shore" crane in Port Elizabeth, the crawler cranes and additional equipment will be relocated to Cape Town for the next phase of the project.



Client : Cosira Projects  
Location : Anglo Platinum  
Equipment : CC 2600H

A CC2600 was used for the erection of 60t conveyer gantry sections. Due to very tight tolerances on the "fit" of the various sections, it required skilful and smooth operations that only a Sarens operator can provide. The job was completed safely.



Client : Columbus Stainless  
Location : Middelburg  
Equipment : LTM 1400 Installation of a vessel.



Client : Bombela  
Location : Viaduct 3, Allandale Site of the Gautrain Project  
Equipment : LTM 1400

SSA performed the lifting of 52t bridge beam segments with an LTM 1400. The crane is being used on two sites of the Gautrain



Project, namely Modderfontein and Allandale (approximately 10km apart), where the same bridge beam segments are being installed.



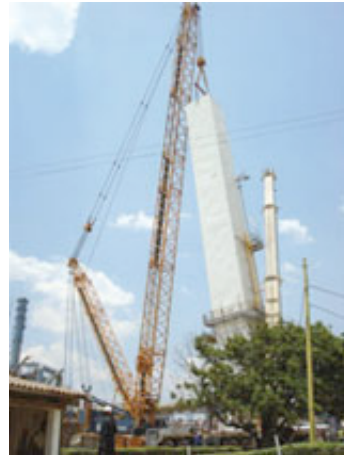
## Present in South Africa, why not in Zambia [\[top\]](#)



Client : Rigging and Lifting Services  
Location : Konkola Copper Mines, Chingola, Zambia  
Equipment used : CC2600; LTM 1400

On this project SSA supplied the Demag CC2600 for the erection of an Air Products, "Cold Box", with weight of 140t. They also supplied the LTM 1400 for the tailing operation, as well as the assembly of the CC2600. The cranes were mobilized by road, travelling through Zimbabwe, and then on to Zambia, a total distance of approximately 2.000 kilometers.

The logistics of transport, customs clearance (at Zimbabwe and Zambian borders), and distance, made this a very challenging job.



## Makro, Sarens new partner in Brazil ... Let's dance ... [\[top\]](#)

At the end of 2007 Sarens signed a new partnering agreement with the Group Makro, having its headquarters in Fortaleza but active all over the country. Where Makro supplies local services and hydraulic craneage, Sarens supplies heavy lift and transport, engineering and equipment. Joining efforts results in a "strong team"!

Picture : Dirk Verwimp, the Rodrigues family and Makro company owners.



## USA projects [\[top\]](#)



Client : Rigging International  
Location : Los Angeles, CA to Dutch Harbor, AK  
Equipment : Platform trailers, Williams rod

A Hitachi Container crane was sent from Los Angeles to Dutch Harbor, Alaska in September 2007. The crane arrived in Dutch Harbor in perfect condition, despite being caught in a major storm. Norsar provided engineering, sea fastenings and onsite support for loading.



Client : Morgan Machinery  
Location : Cascade General in Portland, Oregon  
Equipment : 2.400 t SWL skidding system

Norsar did the skidding of a 1.900t RSW Dam Gate from its building location to its launching position. The skid included a 20 degree turn about 2/3 of the way to the water.





Client : Nelsury  
 Location : Zeebrugge (BE) – Montevideo (UY)  
 Equipment : rolling system, Williams rod, standard pipe spools and pin ends

Norsar moved Kocks container cranes weighing about 1.150t each. They were loaded aboard the ZPMC vessel "Zhenhua 8" and made a safe journey to Montevideo.



Client : McClure and Sons, Inc  
 Location : Washington State, USA  
 Equipment : skidding system, rod lifters, SP dollies, climbing jacks, Williams rod, pipe spools

A lifting rig, constructed from Sarens' standard materials, rated at safe working load of 1200t was used to lift concrete pontoons weighing 800t from the self propelled dollies. Norsar then skidded the pontoons out over the water and then lowered them into the water to be launched.



Client : Atkinson Construction  
 Location : Renton, WA USA  
 Equipment : skidding system, rollers, William rod

Norsar removed an old railroad bridge and replaced it with a new one. The bridge was owned by Burlington Northern - Sante Fe Railroad. Just a 2 days job.



## Bare rental activities [\[top\]](#)

February 2007 saw the creation of a bare rental activities department to respond to tailor- made solutions on fleet size and quantities whereby the clients operate and maintain the units themselves, with Sarens support if required. Since its creation, the department has provided equipment to various projects in the UK, Poland, Nigeria, Angola, Cameroon, Guinea and Peru. Fleet quantities of up to 35 units and sizes from 20t hydraulic, man lift, forklifts up to a 500t crawler crane were involved in these projects.

Queries can be sent to [barerental@sarens.com](mailto:barerental@sarens.com),  
 responsible : Stefaan Vandierendonck



New Terex RT 1120, soon part of the "bare rental" fleet.

## 29 turbines V90 on 80m [\[top\]](#)



Client : Vestas France  
 Location : Salles Curan - France  
 Equipment used : LG 1550; LTM 1090

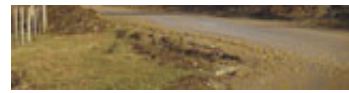
In France Sarens Wind has a year contract with various major wind turbine suppliers of which the long lasting loyal client is Vestas France. Thank you, Vestas!

### Wind turbine number 2.000 is erected!

On 19/11/2007 Sarens erected its 2.000<sup>th</sup> wind turbine, a Repower turbine, on the site of Les Pres hauts in France. A good reason to handover a reward. Sarens started erecting wind turbines since the early eighties.







From left to right : Mr Peter Libert (Sarens Group), Mr Andreas Guenther (Repower) and Chris Schatsbergen (Sarens Wind)

If you would like to unsubscribe please send an e-mail to [unsubscribe@sarens.com](mailto:unsubscribe@sarens.com)